

Myth #5

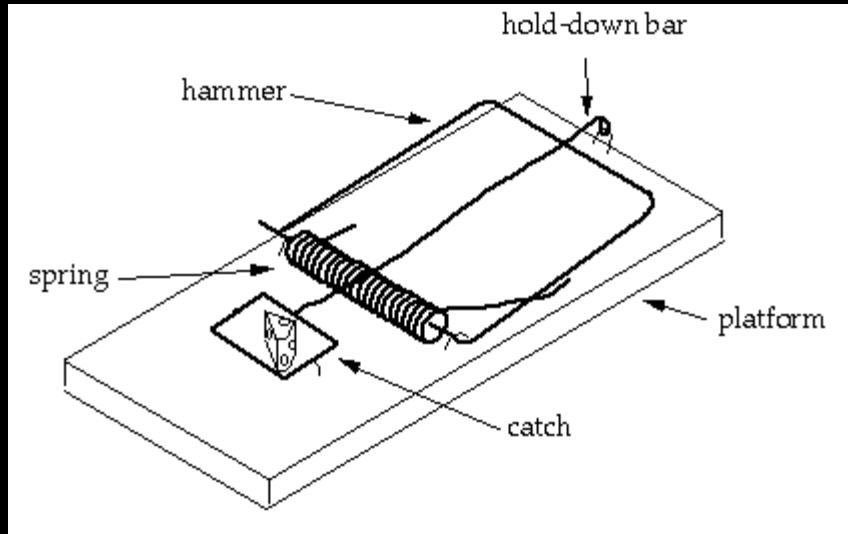
Evolution is Scientific;
Creation is Religious

Here is one example of how Evolution is contrary to science, the 2nd Law of Thermodynamics, as illustrated through the Design Theory.



Creation vs. Evolution

- The Design Theory



A mouse trap is only five parts connected in a certain way. Yet if you find a mousetrap, you know it was designed by an intelligent person; it didn't happen by accident, not even over "millions and millions of years."

The five parts are "irreducibly complex." Take away just one part, and the mousetrap won't work.

Now look at a system which has 40 irreducibly-complex parts. Take away just one of the 40 parts, and the whole system fails.

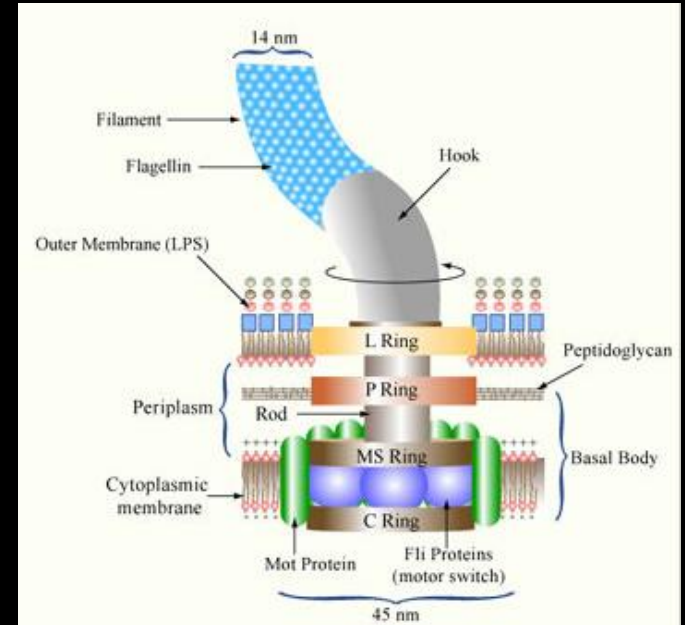
Creation vs. Evolution

- The Design Theory

This is the flagellum of an e-coli bacteria. Its 40 irreducibly-complex parts allow it to spin at 100,000 rpm, change direction and be back up to 100,000 rpm in $\frac{1}{4}$ turn. It has a chemically-powered motor that fascinates scientists, and it's more efficient than any outboard motor man has invented.

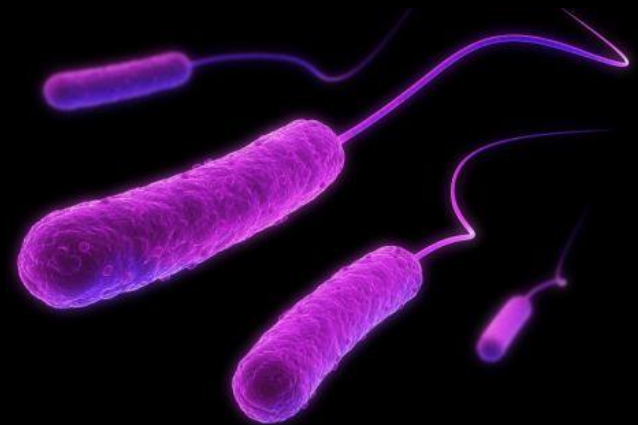
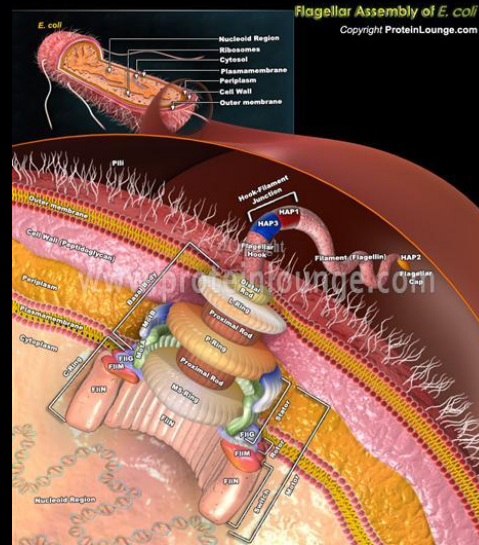
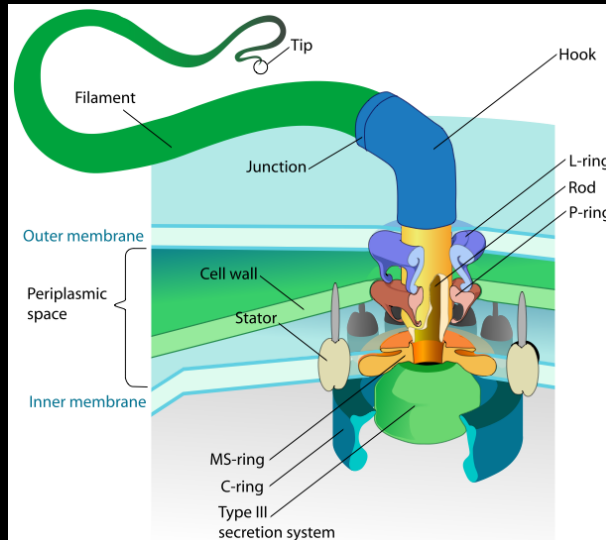
Take away just one of the 40 irreducibly-complex parts, and the flagellum won't work. So, by chance evolution alone, all 40 parts would have to *simultaneously mutate and fit together into a working system*.

If you think the 5 parts of the mousetrap could not assemble by accident, do you see why it would be far more difficult for the 40 parts of the e-coli flagellum to assemble by accident? And if the flagellum doesn't work the first time, it makes the e-coli less successful by dragging around a useless appendage. The mutation would not survive. The Design Theory is a major argument against evolution. *Who designed the flagellum?*



Creation vs. Evolution

- Other views of the flagellum: an accident of evolution...or the creation of a superb Designer?



Creation vs. Evolution

- Entropy



What happens to a pile of bricks if you let them sit for thousands of years?

What if you add more energy to the system by pushing them around with a bulldozer?

Creation vs. Evolution

- Entropy

The 2nd Law of Thermodynamics, entropy, says that things fall apart. Adding energy, like pushing the bricks around with a bulldozer, just speeds up the process.

The bricks will turn to dust.



Creation vs. Evolution

- The Design Theory

But if a *designer* makes a *design* and energy is added *according to the design*, we get function and beauty.

Putting energy into a system without a design increases entropy.

Adding energy according to design is the only way to defeat entropy.

Who is the Designer of the world?



Evolution



Chance/Evolution:
Entropy and Devastation

Creation



Designer/Creation:
Function and Beauty

Evolution



Creation



No human witnessed the “Big Bang” and Evolution, and it cannot be recreated in the laboratory. It contradicts science, the 2nd Law of Thermodynamics, entropy. Evolution is a religious theory, not science.

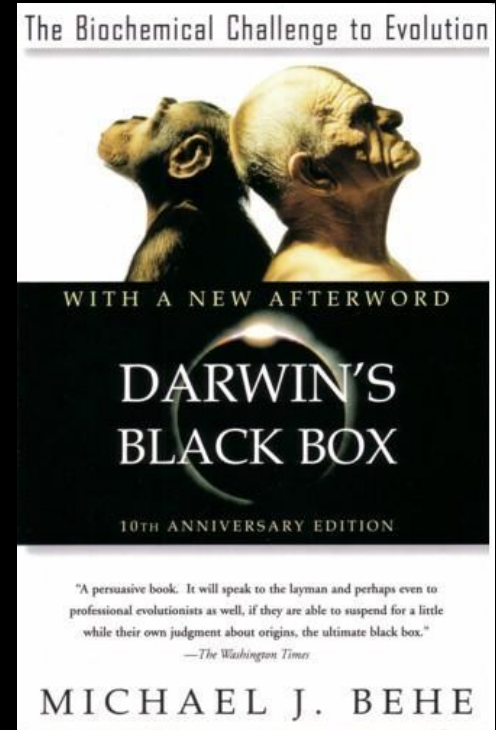
In fact, both Evolution and Creation are religious. Evolution is based on atheism. Creation is based on God.

But only one of these religions is supported by your taxpayer dollars and taught to children in public schools as if it were Gospel.

The information here is inspired by a book written by Michael J. Behe, Ph.D., Professor of Biochemistry at Lehigh University.

Naming *Darwin's Black Box* to the National Review's list of the 100 most important nonfiction works of the twentieth century, George Gilder wrote that it "overthrows Darwin at the end of the twentieth century in the same way that quantum theory overthrew Newton at the beginning." Discussing the book in *The New Yorker* in May 2005, H. Allen Orr said of Behe, "he is the most prominent of the small circle of scientists working on intelligent design, and his arguments are by far the best known." From one end of the spectrum to the other, *Darwin's Black Box* has established itself as the key text in the Intelligent Design movement—the one argument that must be addressed in order to determine whether Darwinian evolution is sufficient to explain life as we know it, or not.

For this edition, Behe has written a major new Afterword tracing the state of the debate in the decade since it began. It is his first major new statement on the subject and will be welcomed by the thousands who wish to continue this intense debate.



Myth #6
Evolution is Scientific,
but Creation is Just Religious

BUSTED!